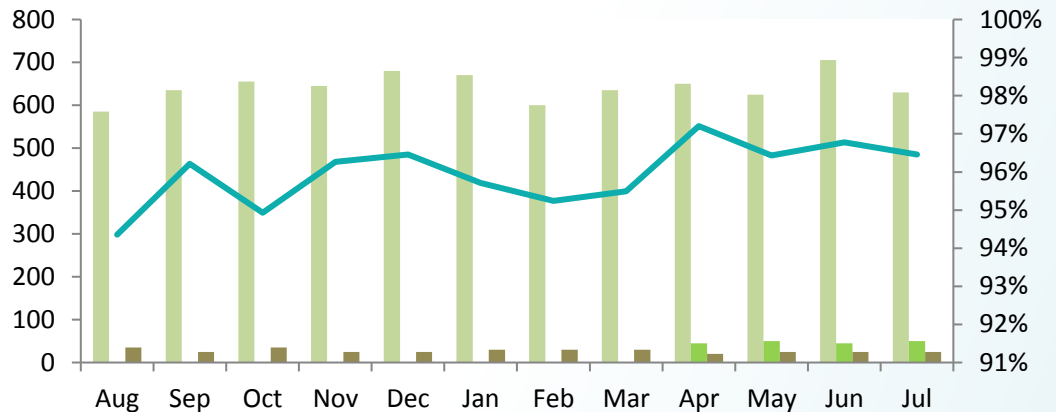


Recycling Achievement Report

Report Date: Jul-15

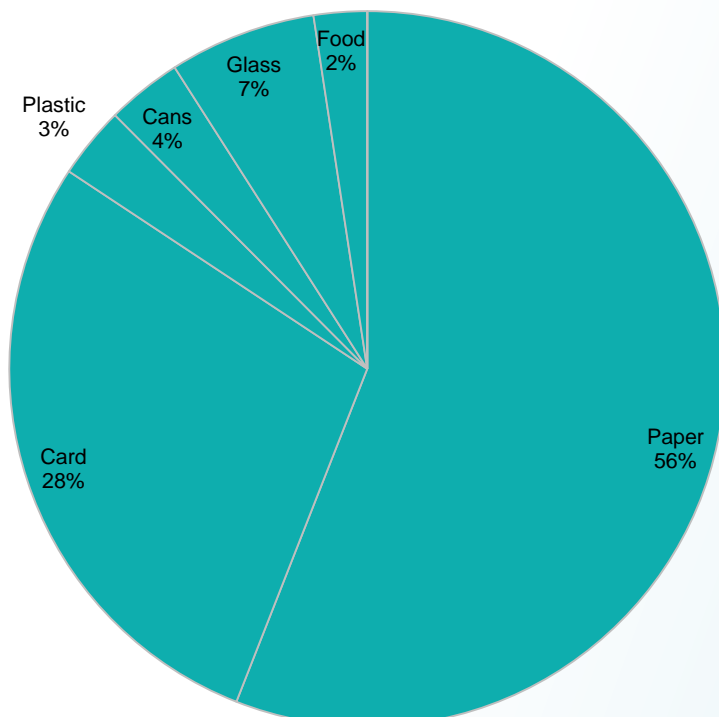
Name: British College of Osteopathic Medicine (BCOM) (Li)

Last 12 months, Material collected (by destination):



	Aug	Sep	Oct	Nov	Dec	Jan	Feb	Mar	Apr	May	Jun	Jul
Recycled (Kg)	585	635	655	645	680	670	600	635	650	625	705	630
Anaerobic Digestion (Kg)	0	0	0	0	0	0	0	0	45	50	45	50
Waste to Energy (Kg)	35	25	35	25	25	30	30	30	20	25	25	25
Recycling Rate	94%	96%	95%	96%	96%	96%	95%	95%	97%	96%	97%	96%

Types of material recycled:



Statistics:

	This month	12 Months:
Trees Saved:	6	75
CO2 Tonnes Saved:	1	11
KWH Energy Produced::	29	239
Recycling Rate:	96%	96%